



INSTALLATION INSTRUCTIONS MODELS DH34/56

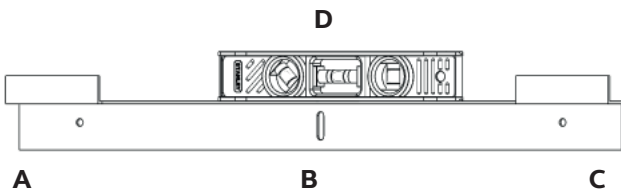
HEALTH AND SAFETY WARNING

As the Heat Pump contains electrical and rotational equipment, it is recommended that ONLY competent persons carry out any work on this type of machine (see guarantee).
Isolate electrically before entering machine or removing panels.

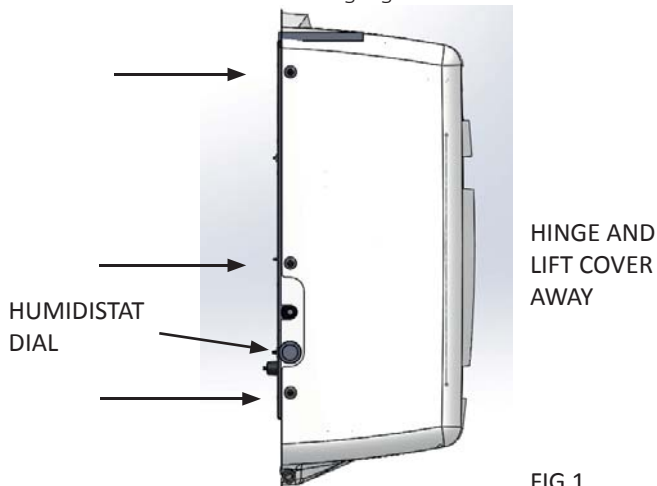
INSTALLATION – WALL MOUNTING, ALL MODELS

Mount the wall bracket to the wall before removing the dehumidifier from the supporting packaging. The dehumidifier should be kept upright before it is mounted on the wall and put into operation. To avoid damaging the dehumidifier, lift the dehumidifier from the packaging and mount directly on the wall bracket.

The wall bracket for the dehumidifier can be found underneath the dehumidifier.



1. Secure bracket on wall in required position. Drill hole \varnothing 6.0mm (no. 10) by 60mm deep as shown at 'A'. Insert wall plug and screw bracket in place.
2. Set bracket level with spirit level 'D' as shown, drill through and fix it at 'B' with wall plug and screw.
3. Ensure bracket still level, tighten screws 'A' and 'B', finally drill and fix as above at position(s) 'C'.
4. Check all screws are tight.
5. Lift dehumidifier on to locating lugs on wall bracket.



6. Remove the front cover by undoing the three screws in each side of the cover as shown in FIG 1.

The electrical supply to the unit must be sized according to data on serial number label paying special attention to I.E.E. regulations latest edition regarding the special conditions governing electrical supply to machines in potentially damp areas. The machine should be installed in accordance with EMC2004/108/EC.

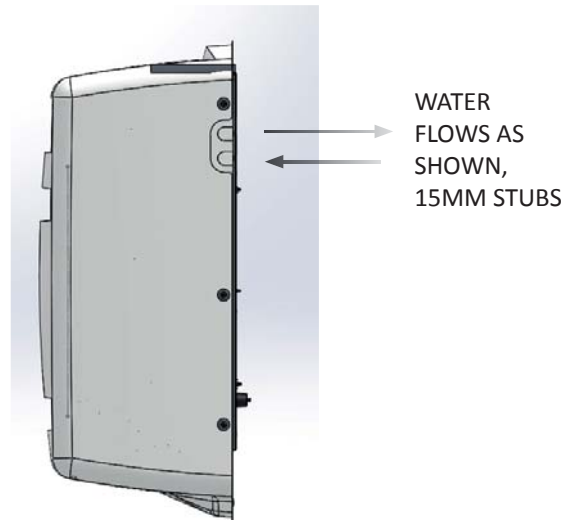
The electrical supply should be connected to the terminal block situated on the left hand side of the dehumidifier. Brown/red to 'live', blue/black to neutral and earth to the stud provided.

Fan mode switch can be set to cycle fan when humidistat senses demand but should be set to continuous to promote good air circulation and reduce condensation. Note that on models fitted with LPHW the fan(s) will start automatically whenever there is an air heating demand. On 'X' models fan(s) will stop during defrost cycle.

7. Locate pipe from drip tray and run it away to waste. The moulded cover of the dehumidifier incorporates a path for the tube in the right hand bottom corner.

MODELS WITH L.P.H.W. FITTED

8. Connect water circuit piping to 15mm stubs projecting from side of machine as per diagram below.

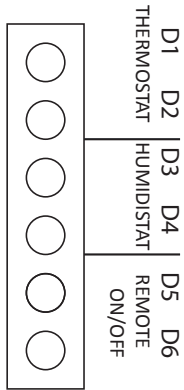


9. It is recommended that isolating valves are fitted to enable isolation of the machine in the event of service. Complete water circuit as per diagrams overleaf.
(a) The circulating pump must be sized to take into account the design flow rate of the machine plus the water system resistance.

	DH34	DH56
UNIT FLOW RATE l/min	5	5
UNIT PRESSURE DROP m/hd	0.7	0.7

12V REMOTE HUMIDISTAT OR REMOTE ON/OFF CONNECTIONS

(ORDER DEHUMIDIFIER WITH OPTIONS)



Terminals not used on DH34/56.

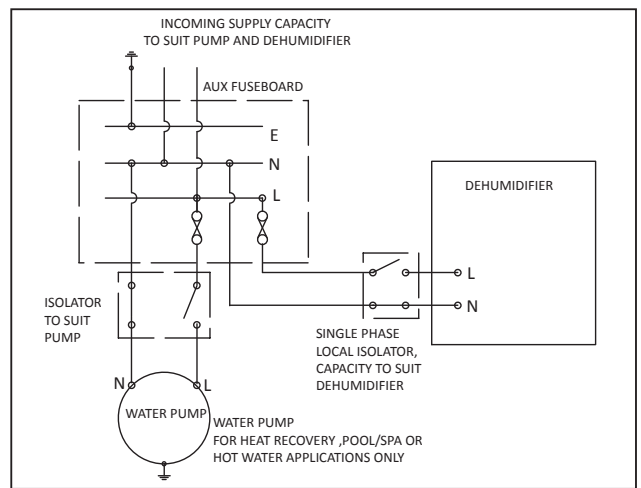
When using a remote humidistat connect the humidistat to terminals D3 and D4. Ensure the internal humidistat in the dehumidifier is set fully clockwise, for maximum dehumidification. The maximum cable length is 250 metres for 1mm² cable.

When using the remote ON/OFF facility remove the link between D5 and D6 and connect the remote ON/OFF switch to these terminals.

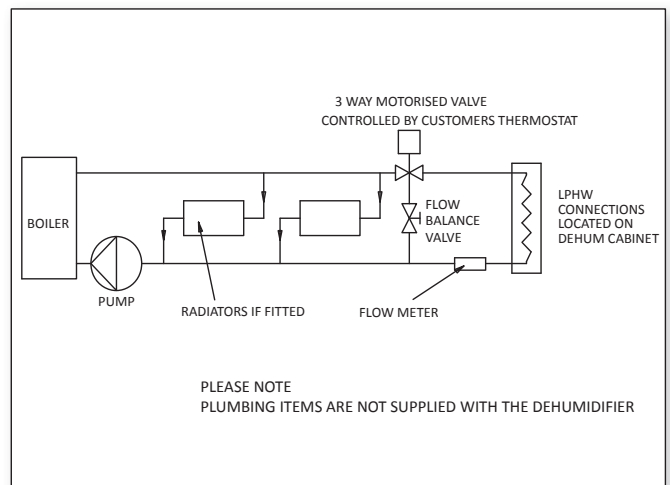
GAS CHARGE

The dehumidifier incorporates a hermetically sealed refrigeration circuit of less than 6kg refrigerant. R407c Global Warming Potential (GWP) 1774.

ELECTRICAL SUPPLY CIRCUITS



LPHW PLUMBING SCHEMATIC



USER CHECK LIST

OPERATION

A recommended humidity setting (50–60% RH) is a mid way point on the humidistat dial.

Minimum Air Temp DH 34/56A = 15°C

Minimum Air Temp DH 34/56 AX = 0°C

Note: On 'X' models fan stops during defrost.

On machines with LPHW, fans will start automatically as required.

MAINTENANCE

- Ensure air inlets/outlets are kept clear and clean.
- Wipe clean with damp cloth or cleaning fluid suitable for fibreglass and/or PVC.
- Ensure drain line is kept clear.

Note: Three reply paid Warranty Registration Card must be returned to ensure the correct warranty is given. If you do not find a Registration Card with your machine please contact CALOREX Service Department giving your name, address, and the serial number of your machine. A card will be sent to you for completion.

HEALTH AND SAFETY WARNING

As the heat pump contains electrical and rotational equipment, it is recommended that ONLY competent persons carry out any work on this type of machine (see guarantee). Isolate machine electrically before entering machine or removing panels.

MACHINE NOT RUNNING AT ALL CHECK THE FOLLOWING

- Is the supply switched on?
- Is the supply fuse healthy?
- Turn humidistat dial fully clockwise.
- Check air inlets and outlets for obstructions.
- If after carrying out the above and waiting one hour, the machine does not start, phone for service.

MACHINE FAN ONLY RUNNING

- Turn humidistat dial fully clockwise.
- Check air inlets and outlets for obstructions, if after 30 minutes the machine has not restarted, phone for service.

WATER LEAKING FROM BASE OF UNIT

- Check connection from machine to drain for blockages and clear accordingly, check fall is adequate.
- Check the machine is level, both vertically and horizontally.

The user check list should be carried out before initiating a service call. Do not attempt to interfere with any internal control settings as these have been factory calibrated and sealed.

If in doubt or if advice is required, contact Calorex Service Department Telephone +44 1621 857171 or 856611